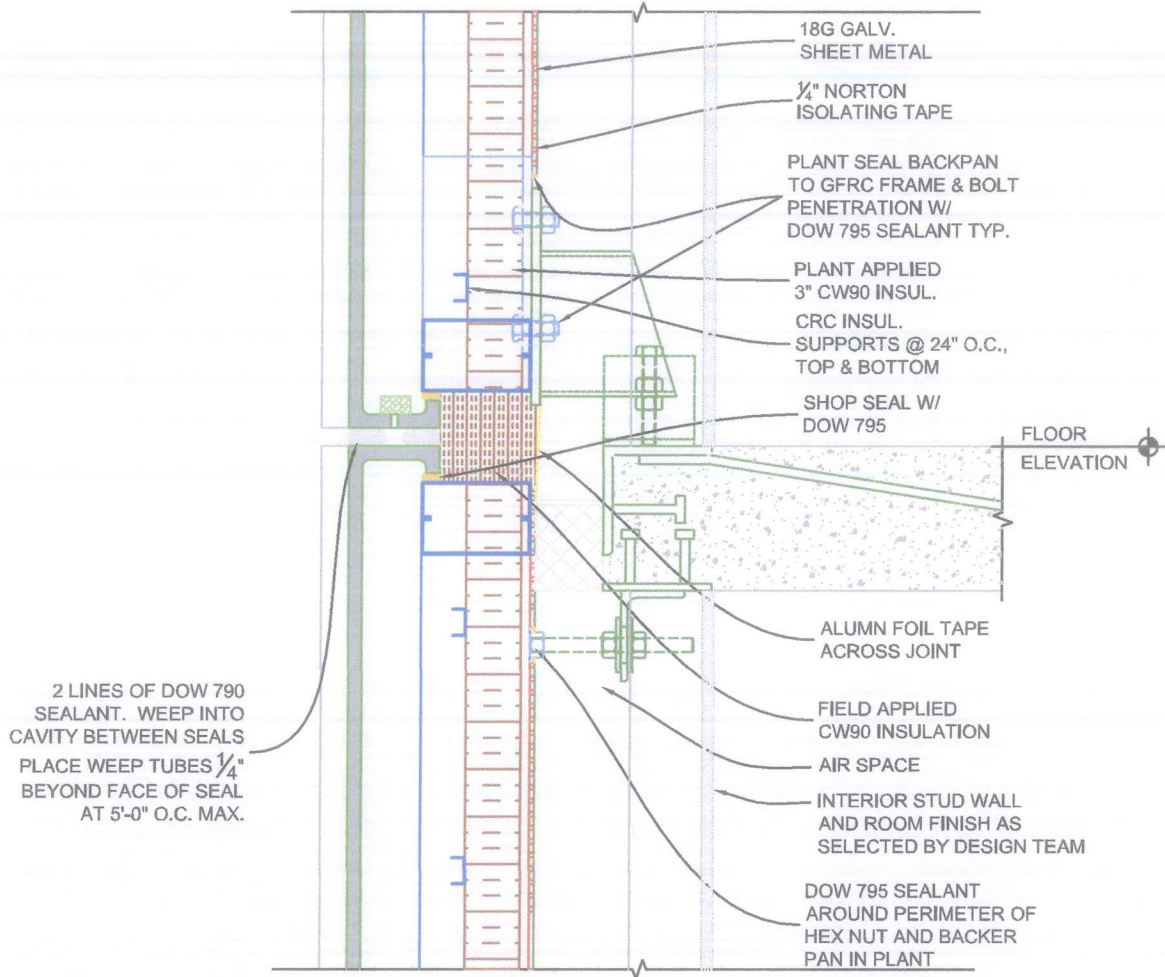




GFRC Cladding Systems, LLC

Glass Fiber Reinforced Concrete	118 North Shiloh Rd. Garland, Texas 75042	Telephone: 972-494-9000 Fax: 972-494-1900
--	---	--



GFRC CLADDING SYSTEMS, LLC. UNITIZED PANEL SYSTEM

SCALE: 1 1/2"=1'-0"

THE SYSTEM PRESENTED ABOVE IS DESIGNED FOR AN OUTSIDE TEMPERATURE OF -20 F, INSIDE TEMPERATURE OF 75 F AND A RELATIVE HUMIDITY OF 30%. ENGINEERING AND TESTING OF THE SYSTEM CONFIRMS NO CONDENSATION OR MOISTURE PRESENT ON THE ROOM SIDE OF THE SHEET METAL VAPOR BARRIER.

THE OVERALL R VALUE FOR THE WALL COUNTING THE GFRC PANEL AND THE INTERIOR AIR SPACE EXCEEDED R19 FOR THIS PROJECT DESIGN. OTHER DESIGNS YELDED VALUES UP TO R23 USING 3" INSULATION. (SEE ATTACHED ANALYSIS) EACH PROJECT IS DIFFERENT AND GFRC WILL PERFORM A PROJECT SPECIFIC ANALYSIS FOR EACH NEW PROJECT DESIGNED WITH OUR UNITIZED PANEL SYSTEM.

FOR MORE INFORMATION RELATED TO THERMAL PERFORMANCE, CONDENSATION CONTROL, OR WATER CONTROL AND DRAINAGE. PLEASE CONTACT JIMMY LEE @ 972-494-9000 OR jlee@gfrc.us